



DUKE

Available in both trailer and track mounted versions, the new cutting edge Dando Duke cable percussion rig boasts a range of innovative features for increased efficiency and productivity.



WWW.DANDO.CO.UK

Easy Transportation

The Duke is available in both trailer and track mounted versions.

Mounted on a heavy duty twin axle trailer with built in lights, the Duke can be easily towed behind a regular pickup truck or van for easy transportation between sites.

Alternatively the Duke is available mounted on heavy duty tracks fitted with 2 speed tracking motors and the option of radio remote control or umbilical tracking.



Track mounted at max mast height (5.5m)



Various Drilling Positions

The mast has a large hydraulic ram built into the main mast body which allows it to extend to a maximum working height of 5.5m and a lower height of 4m.

The stainless steel support legs are also telescopic which allow the rig to be used in areas of restricted head room. There is no longer the need for the supports to be “walked around” into position therefore greatly reducing setup space.

Track mounted at low mast height (4m)



Hydraulically Powered

Driven by a water cooled modern diesel engine, hydraulic pumps provide hydraulic power to the stabilisers, mast, PTO and an infinitely variable winch which offers impressive speed and pulling power. The brake and clutch are pneumatically operated.

Hydraulic PTO

The external hydraulic power take off facilitates the quick connection of a variety of equipment including road breakers and casing jacks.



On-board Compressor

An 8m recoil air hose with 1/4" quick connect is fitted inside the rig for use with air tools and tyre inflation equipment.



Stability

When faced with uneven terrain, levelling of the rig is made easy thanks to four hydraulic stabilising jacks.

Optional Casing Jacks

With a PTO, Dando's separate casing jacks can easily be coupled up to pull stuck casing.

CHASSIS

Type	The main chassis of the rig is manufactured from steel laser cut and folded sections providing a rigid base
Levelling	The rig is levelled by 4 hydraulic jacks, one at each corner of the rig
Lifting Points	Rated lifting/tie down points as standard on all 4 corners

CARRIER

Mounting Options	Trailer (Type O2) Crawler Unit
------------------	-----------------------------------

TRAILER SPECIFICATION

Description	Heavy duty twin axle trailer rated to 3500kg
	Over-run auto reverse brakes
	Towing lighting fitted into canopy
	Quick change number plate as standard
	Reverse alarm
	Spare wheel carrier and tyre built into the front of the tow assembly, as standard
	HD serrated jockey wheel
	Hitch is available as eye or 50mm ball depending on the customer's preference

CRAWLER SPECIFICATION

Description	Heavy duty tracks fitted with 2 speed tracking motors
	Tracks can be rubber, steel or hybrid steel rubber blocks
	Rear of the chassis is fitted with a combination towball and pin hitch
Approx. Ground Pressure	38 kPa (5.5 psi)
Tracking	Radio remote or umbilical
	Emergency override levers are fitted to the tracking valve

ENGINE

Type	Perkins 1.5 L 403D-15 . Water cooled normally aspirated diesel engine fitted with a chalwyn spark arrestor as standard
Power	23.9 kw (32 hp)
Torque	94.4 Nm
Fuel Tank	Stainless steel construction Capacity: 44 L
Fuel Consumption	1-2 L per hour

MAST

Type	Main mast section consists of a large box section that extends hydraulically allowing for variable working heights
	Telescopic support legs with adjustable feet for easy levelling and compact setup
Max Derrick SWL	6000 kg
Max Working Height	5.5 m
Min Working Height	4 m

HYDRAULIC SYSTEM

Type	Main closed loop pump + two gear pumps
Hydraulic Tank	Stainless steel construction Capacity: 80 L
System Pressure (Max)	300 bar (4351 psi)
Filtration	10 micron charge filter and return line filter
Hydraulic PTO	20-30 l/min @ max 180 bar (2610.7 psi)

PNEUMATIC SYSTEM

Type	Hydraulically driven single cylinder air compressor with automatic start/stop. An 8m recoil air hose with 1/4" quick connect is fitted inside the rig for use with air tools and tyre inflation equipment.
Flow (Max)	450 l/min
System Pressure (Max)	8 bar (116 psi)
Reservoir	4.3 L

MAIN FREE FALL WINCH

Description	Hydraulically driven 2 speed winch with large centrifugal mass for "snappy feel"
	Multi plate pneumatically actuated clutch
	Multi plate pneumatically actuated brake with fail to safe actuation
	Large diameter 60/40 split drum: 90m of 16mm LH lay wireline

WINCH PERFORMANCE

	Bare Drum	Full Drum	Max Pull
High Speed (Max)	70 m/min	157 m/min	3000 kgf
Low Speed (Max)	35 m/min	79 m/min	3000 kgf

TOOLING WINCH

Type	Hydraulically driven winch to aid tool handling operation
Drum Capacity	38.5m of 6mm wireline
Max Line Speed	38 m/min
Max Pull	500 kg

ELECTRICAL SYSTEM

Battery	12v. Fitted with isolator key
External Power	External heavy duty 12v plug socket to run lighting tripods
	Console is equipped with 12v charging socket

SAFETY FEATURES

3 emergency stop buttons
Spark arrestor
Over hoist switch
Fail to safe brake
Horn and warning beacon
LED lighting fitted as standard - 2 x lights mounted to mast body; 1 x lamp over main winch drum; 1 x console light
EN16228 compliant

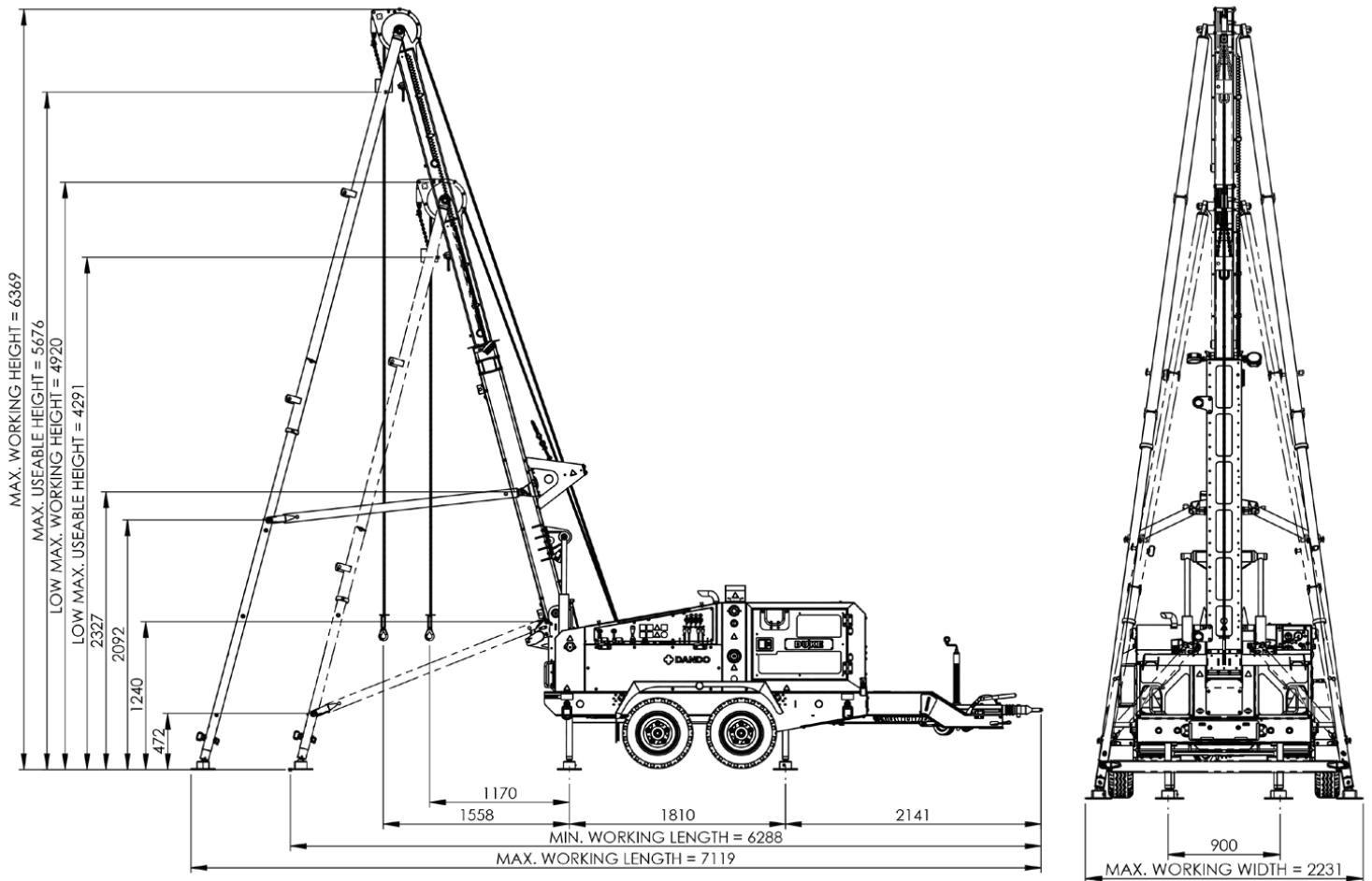
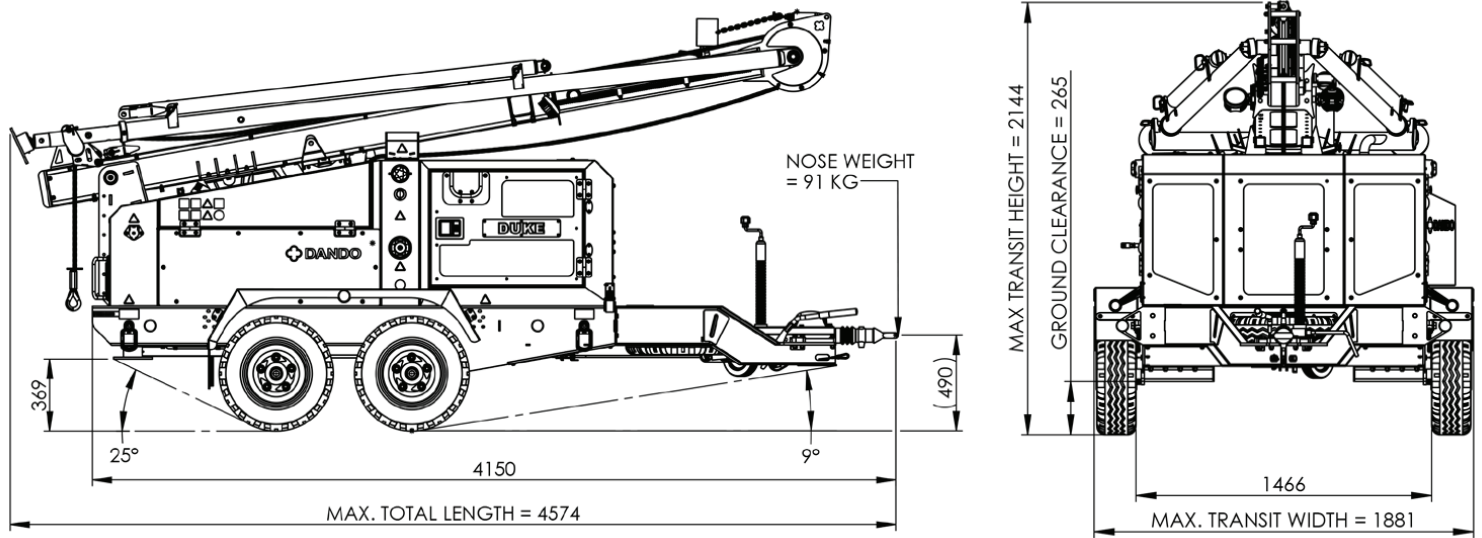
OPTIONAL EQUIPMENT

Hydraulic Casing Jacks
Flotation Tyres - 24x13.00-12 6PR TL
Fire Extinguisher
Lighting Tripods
Tooling Storage
Chalwyn Valve

* Please note that the figures provided in this specification are subject to change in the future.

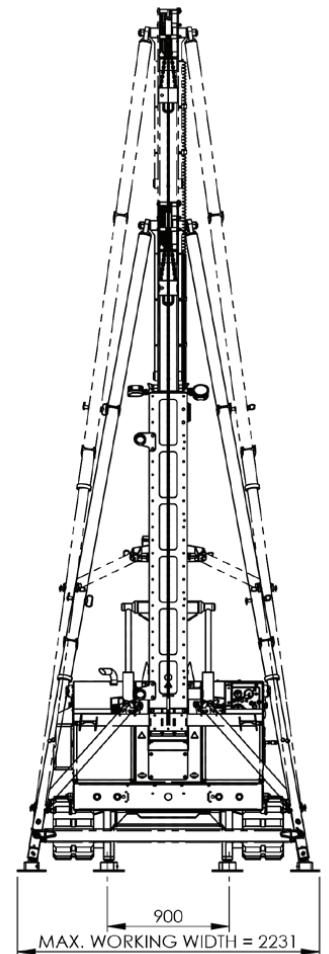
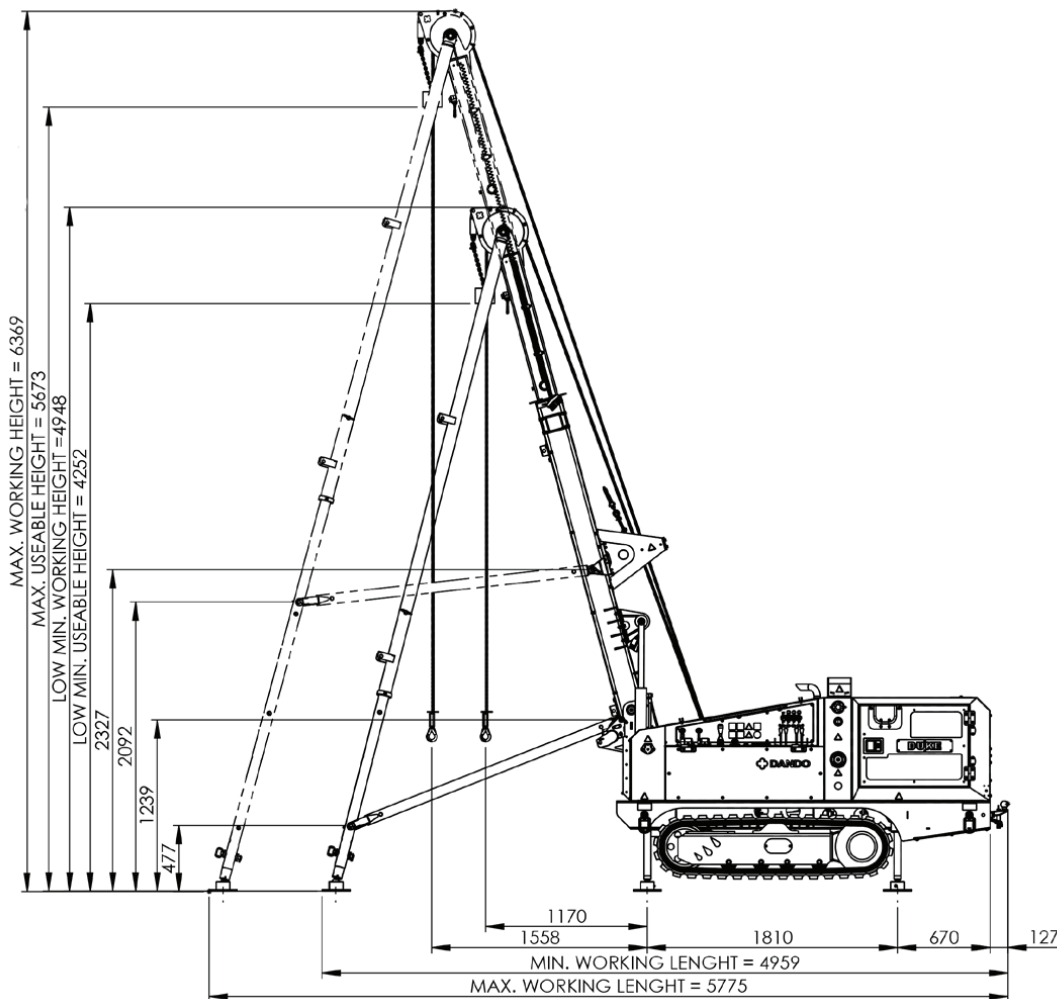
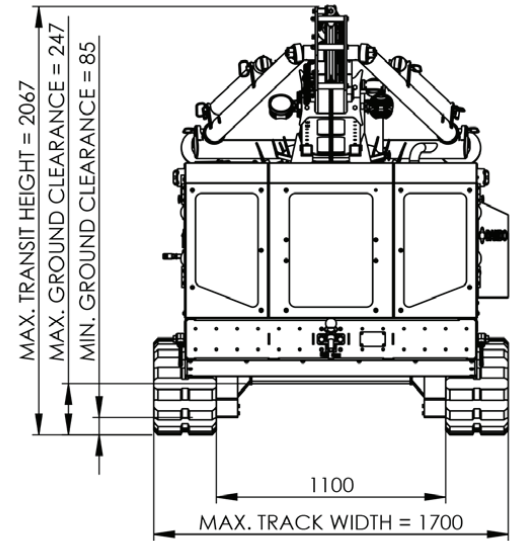
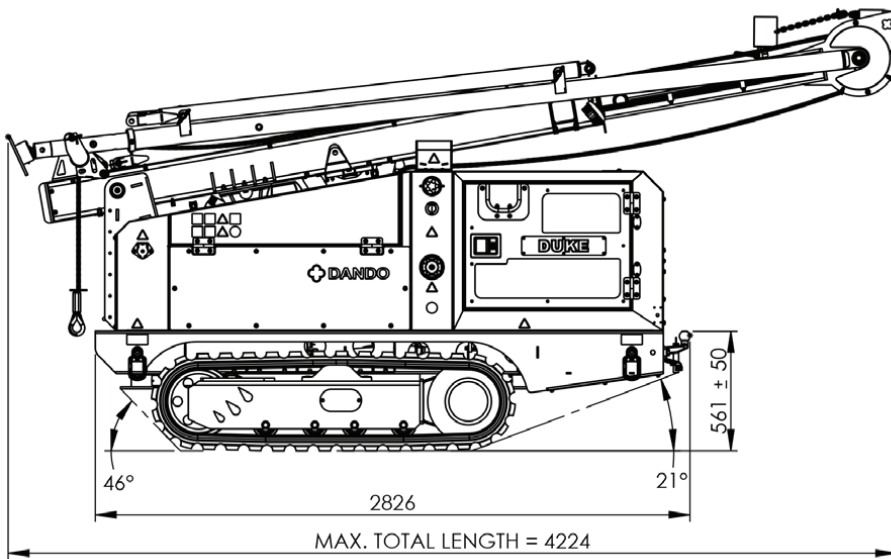
Trailer Mounted Dimensions

* Dimensions in mm



Track Mounted Dimensions

* Dimensions in mm



Please note: All figures and claims made here are indicative and Dando Drilling International reserves the right to make alterations to specification detail without notice. All images are for reference only and may not represent the exact specification outlined in this document. Please visit www.dando.co.uk for our Terms and Conditions

www.dando.co.uk
info@dando.co.uk
 Tel: +44 (0)1903 731312